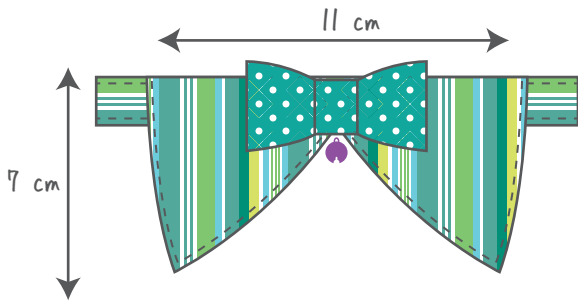


Stylish collar 🎵



Materials

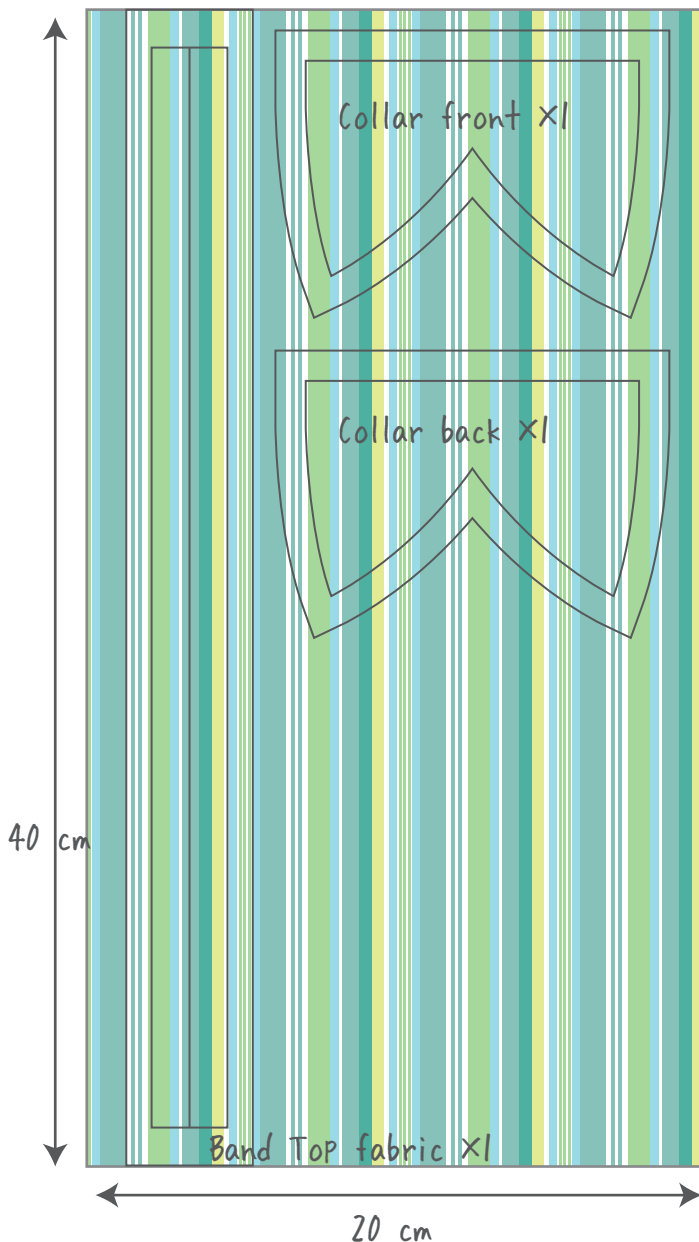
Patterned broadcloth	40 cm X 20 cm
Ribbon	25 mm wide, 18 cm long
Ribbon	15 mm wide, 6 cm long
Clasp	10 mm wide X1
Adjuster	10 mm wide X1
Bell	X1

Finished size: Collar Width: 11 cm
Length: 7 cm

Neck measurement: 24 cm to 29 cm

* Nude size: 19 cm to 23 cm

Cutting guide

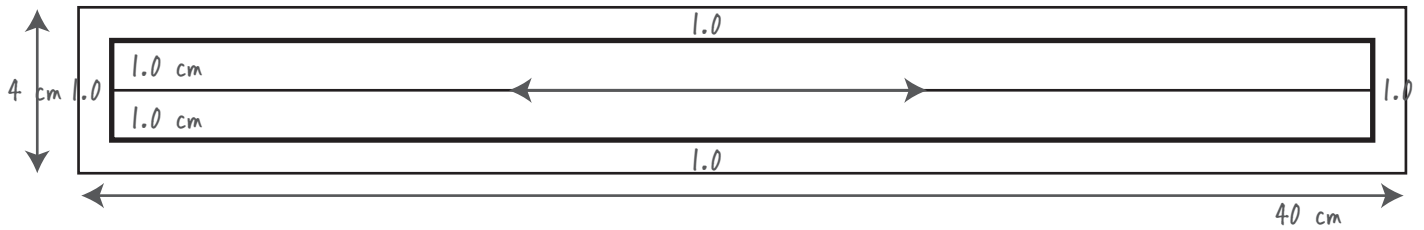


<Caution>

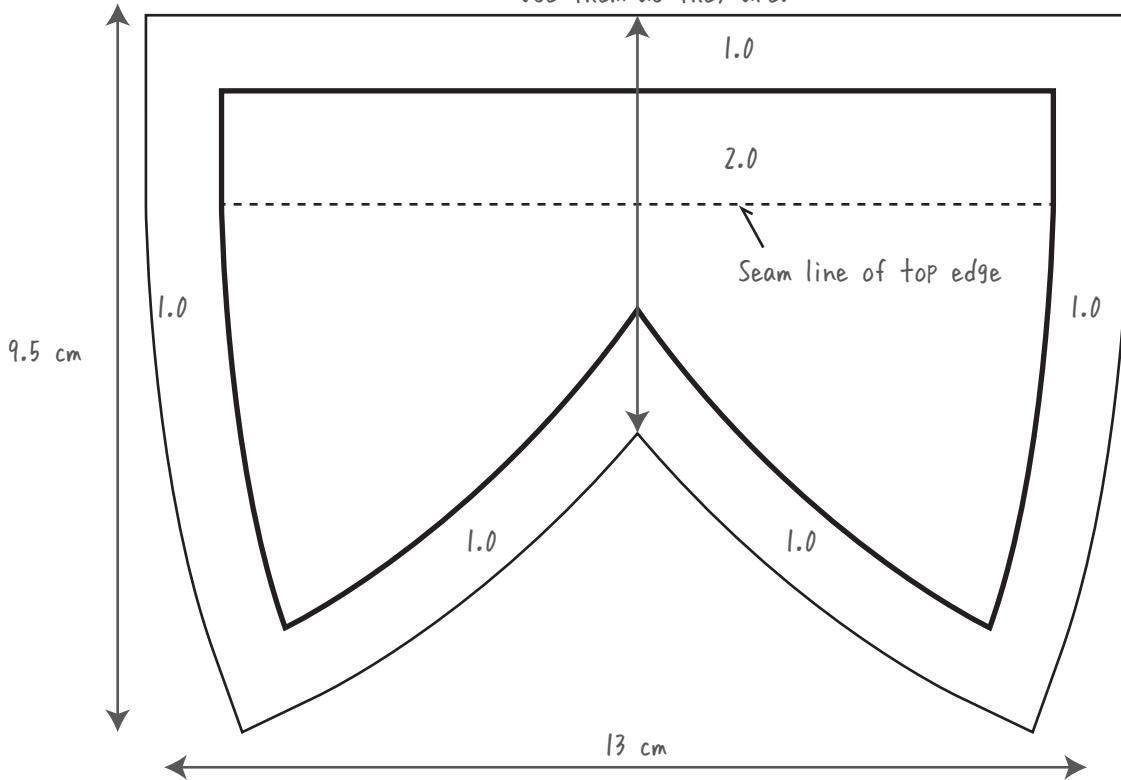
- ★ It is safer to use a safety buckle for cats, which releases when added pressure is applied.
- ★ This collar is intended only for fashion purposes. It is basically meant for indoor cats. Some cats may not like the feel of a foreign object around their necks. In that case, promptly remove the collar. In addition, be careful of the cat's claws getting caught in the fabric when it scratches at it.

*** Pattern ***

Band TOP fabric X1 * Cut out the piece for the band with the dimensions indicated below.



Collar front X1 Collar back X1 * The patterns for the collar back and collar front are at actual size. Use them as they are.



- * The basic seam allowance is 1.0 cm.
- * ——— Cutting line
- * ——— Stitching line
- * Arrows indicate the direction of the fabric grain.

☆ This project is sized for a cat. However, the pieces can be cut to different sizes for a dog! Refer to the size chart for the appropriate dimensions. Let's get started! 🎵

Size	Neck measurement	Collar	Band
Cats	19 to 23	11 x 7.5	38 x 1.0
S (small dogs)	21	10 x 6.5	38 x 1.0
M (small dogs)	24	11 x 7.5	40 x 1.5
L (small dogs)	29	11 x 7.5	45 x 1.5
PF	39	14.5 x 10	55 x 2.0
Medium dogs	40	13.5 x 9.5	56 x 2.0
Large dogs	46	15 x 10	62 x 2.5

☆ "PF" is the size for French bulldogs or pugs.

* Step 1

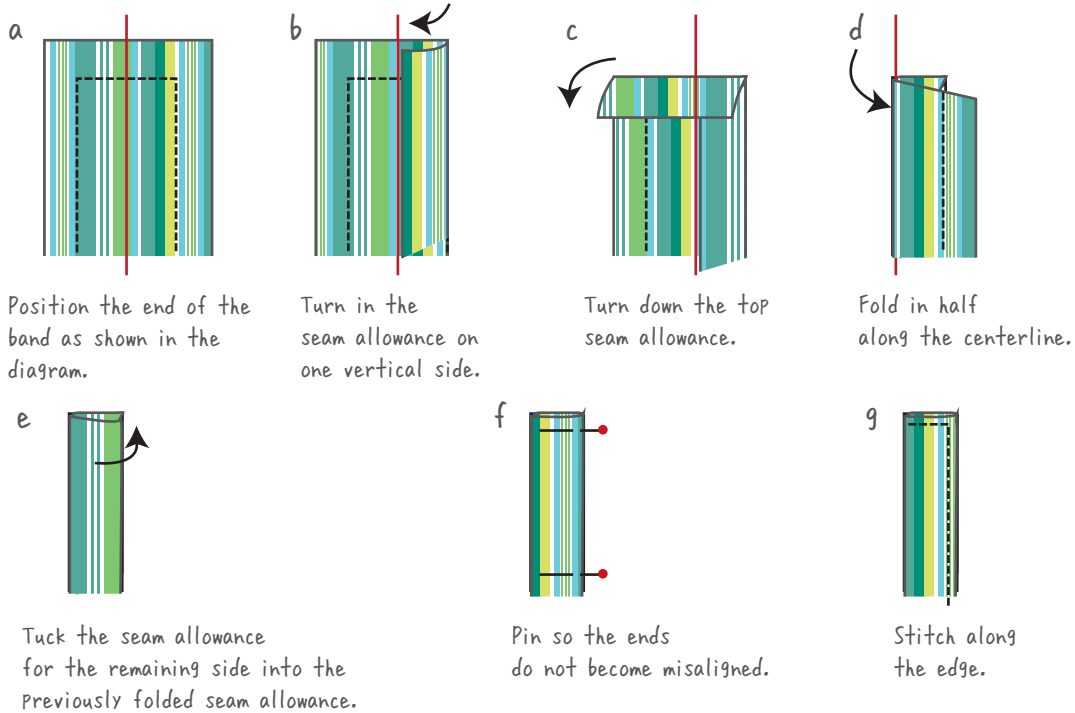
Make the band.

① Make the band with its ends neatly finished.

Note

Sew reverse stitches at the beginning and end of stitching.

<Neatly folding ends>



* Step 2

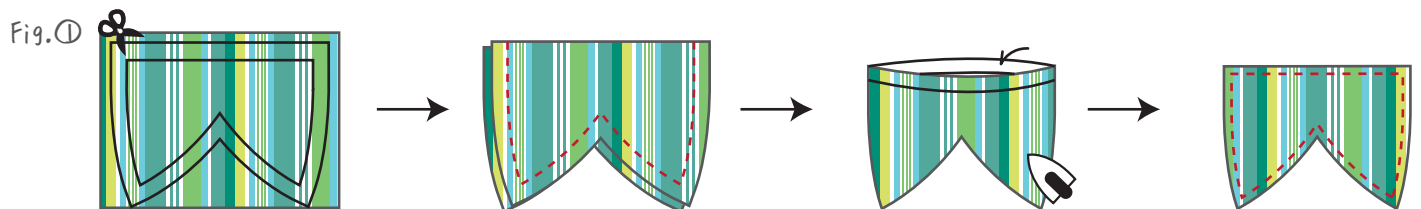
Make the collar.

① With right sides together, sew the collar front to the back.

Turn right sides out, turn in the seam allowance at the opening, and then touch up with an iron. Stitch around the edge, including the opening.

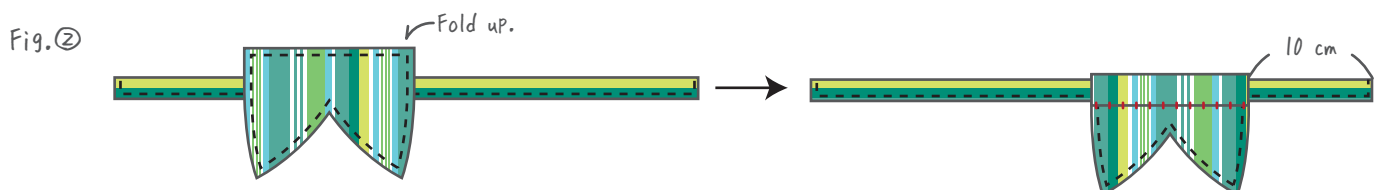
Note

Sew reverse stitches at the beginning and end of stitching.



② Attach the collar to the band.

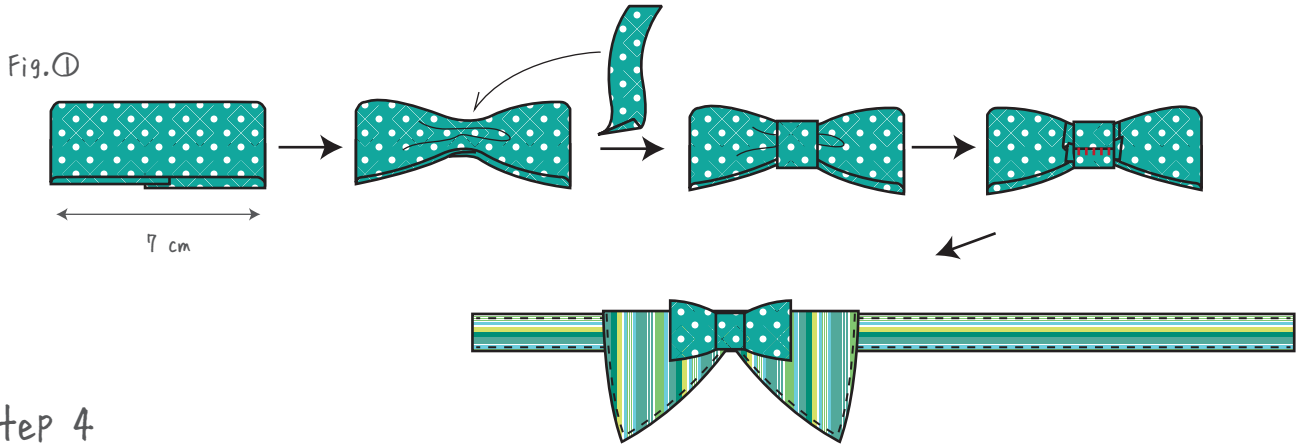
Fold back the top of the collar, and then sew it at the back with blind hem stitches.



* Step 3

Make the bow.

- ① Fold the 25-mm-wide ribbon as shown, and then pinch the center. For the knot, wrap with the 15-mm-wide ribbon, and then sew with blind hem stitches. Sew to the center of the collar.



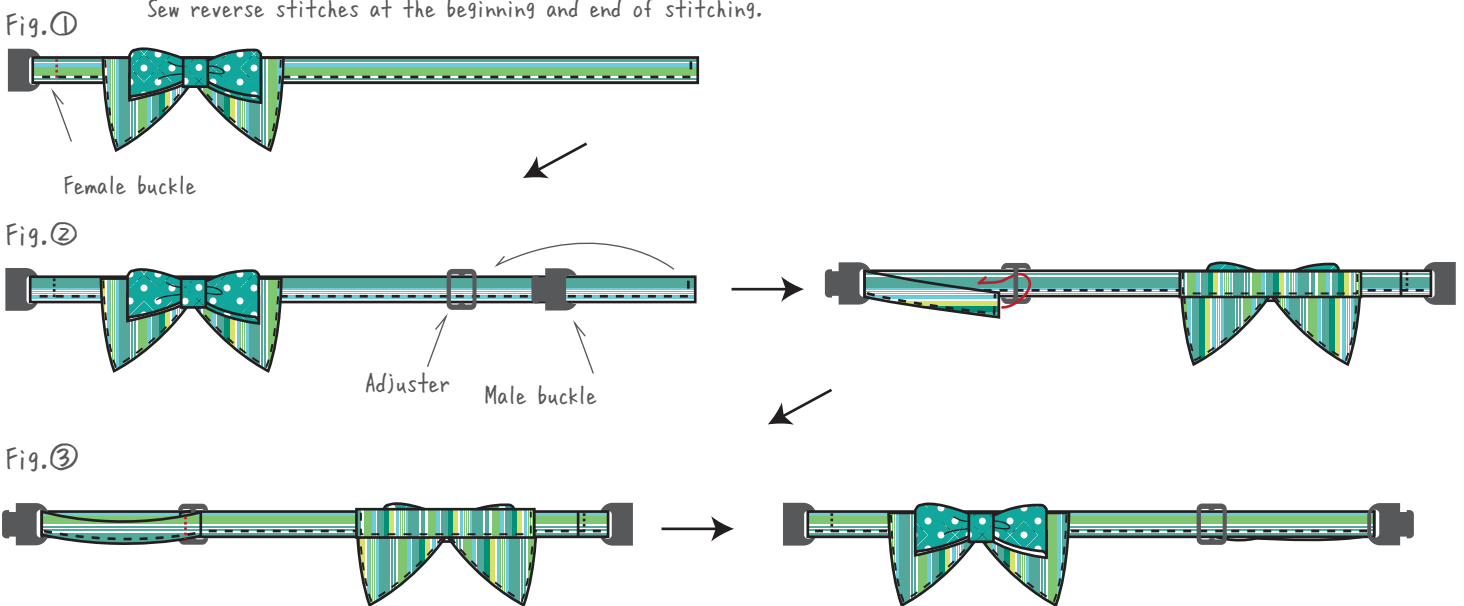
* Step 4

Attach the clasp.

- ① Attach the female buckle to the left end.
- ② Pass the right end through the adjuster, then through the male buckle.
- ③ Attach the right end to the adjuster.

Note

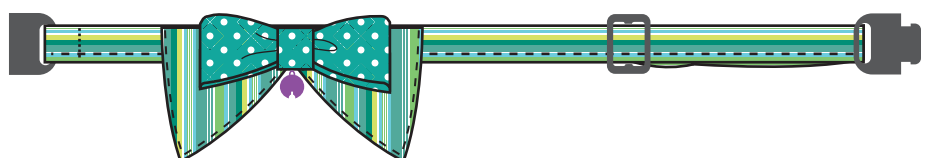
Sew reverse stitches at the beginning and end of stitching.



* Step 5

Finishing

- ① Attach the bell below the bow, and then touch up with an iron. You are now finished!!



----- The stylish collar ♪ is finished!! ☆

☆ Redesign as desired!!

Attach lace or braiding . . .



Make various shapes . . .



Sew custom collars with your favorite details and embellishments on your favorite materials. Then you will be free to coordinate your pet's fashion with their mood of the day. ♪ Create the best style for your pet!!